

Isocab® - Retan cleanroom constructions

We give you space made of steel.



Isocab®

A company
of ThyssenKrupp
Steel

Isocab



ThyssenKrupp



● Isocab® - Retan cleanroom constructions

Isocab nv is a sister company of the German ThyssenKrupp Steel AG.

Our company was initially a manufacturer of demountable sandwich panels for small and medium sized cool rooms and freezer rooms for the food industry.

In recent years, Isocab nv has developed into an international manufacturer of industrial sandwich panels for all kind of markets worldwide. Our product range has been expanded with a range of simple wall and roof cladding, doors, mineral wool panels, cleanroom constructions, Low cost housing and a range of accessories for the food industry.

As well as our commercial headquarters in Bavikhove Belgium Isocab nv have production sites in Dunkirk (FR) and Perpignan (FR). Our worldwide presence is also supported by our production sites in Vietnam (Ho Chi Minh) and China (Rizhao).

Isocab nv have international experience in the field of engineering and is responsible for the technical and commercial support of the projects from “start to finish”.

Should you require a bespoke design for an industrial cool room or freezer room, storage or the processing of goods in specific surroundings, etc...Isocab nv will fulfil your requirements.

Isocab nv disposes of a quality certificate ISO 9001 and is also a member of EPAQ (European Association for Panels and Profiles).



● Isocab® - Retan cleanroom constructions

● wall systems



Flush systems

- CR
- CRA

Semi Flush systems

- IFW
- Decaroc

● ceiling systems



Flush systems

- ISO
- CRA

Semi Flush systems

- IFW
- Decaroc

● door systems



Flush systems

- Single doors
- Double doors

Semi Flush systems

- Single doors
- Double doors
- Sliding doors

window systems



Flush systems

- Flush Window

Semi Flush systems

- Clips Window
- Rubber Gasket Window

light fixtures



- Top access
- Bottom access

accessories



wall systems



Flush systems

CR

- Thickness 80 mm
- Smooth surfaces
- Self supporting and demountable
- Consist of two steel skins bonded by rigid polyurethane foam
- Modular by step
- Electric tubes in each panel
- Suitable for new projects as well as refurbishments of all kind

CRA

- Thickness 80 mm
- Smooth surfaces
- Self supporting
- Consist of an aluminium frame and two steel skins bonded by rigid polyurethane foam or glued mineral wool
- Modular by step
- Possibility of electric tubes
- Suitable for new projects as well as refurbishments of all kind

Semi Flush systems

IFW

- Thickness 40, 60, 80, 100, 120, 140 mm
- Smooth surfaces
- Self supporting
- Consist of two steel skins bonded by rigid polyurethane foam
- Modules of 1180 mm
- Suitable for new projects as well as refurbishments of all kind

Decaroc

- Thickness 60, 80, 100, 120, 150, 300 mm
- Smooth surfaces
- Self supporting
- Consist of two steel skins bonded by glued mineral wool
- Modules of 1170 mm
- Possibility of electric tubes
- Suitable for new projects as well as refurbishments of all kind

ceiling systems

Flush systems

ISO

- Thickness 80 mm
- Smooth surfaces
- Ceiling with non-visible suspension on the inside of the room
- Consist of two steel skins bonded by rigid polyurethane foam
- Modular by step
- Suitable for new projects as well as refurbishments of all kind

CRA

- Thickness 80 mm
- Smooth surfaces
- Ceiling with non-visible suspension on the inside of the room
- Consist of an aluminium frame and two steel skins bonded by rigid polyurethane foam or glued mineral wool
- Modular by step
- Suitable for new projects as well as refurbishments of all kind



Semi Flush systems

IFW

- Thickness 40, 60, 80, 100, 120, 140 mm
- Smooth surfaces
- Ceiling with visible suspension on the inside of the room
- Consist of two steel skins bonded by rigid polyurethane foam
- Modules of 1180 mm
- Suitable for new projects as well as refurbishments of all kind

Decaroc

- Thickness 60, 80, 100, 120, 150, 300 mm
- Smooth surfaces
- Ceiling with visible suspension on the inside of the room
- Consist of two steel skins bonded by glued mineral wool
- Modules of 1170 mm
- Suitable for new projects as well as refurbishments of all kind



door systems



Flush systems

Single doors

- Type ALU-C
- Thickness of doorleaf is 80 mm
- Several dimensions possible
- Steel doorleaf with PUR of mineral wool core
- Doorframe: powdercoated aluminium

Double doors

- Type ALU-C
- Thickness of doorleaf is 80 mm
- Several dimensions possible
- Steel doorleaf with PUR of mineral wool core
- Doorframe: powdercoated aluminium

Semi Flush systems

Single doors

- Type ALU-U
- Thickness of doorleaf is 40 mm
- Several dimensions possible
- Steel doorleaf with PUR of mineral wool core
- Doorframe: powdercoated aluminium

Double doors

- Type ALU-U
- Thickness of doorleaf is 40 mm
- Several dimensions possible
- Steel doorleaf with PUR of mineral wool core
- Doorframe: powdercoated aluminium

Sliding doors

- Thickness of doorleaf is 40 mm or 60 mm
- Several dimensions possible
- Steel doorleaf with PUR of mineral wool core
- Doorframe: powdercoated aluminium

Optional

(on Flush and Semi Flush systems)

- Flush doorwindow
- Integrated electromagnet
- Flush mounted LED
- Integrated flush stainless steel kickplate
- Automatisation on swing- and slidingdoors
- Doorclosers surface mounted or integrated

window systems

Flush systems

Flush window

- Flush on both sides with a wall of 80 mm
- 6 mm thick laminated glass, glued on both sides on an aluminium frame
- Modular by step
- Aluminium frame is laquered in the colors of the wallpanels
- Silicagel to absorb possible humidity

Semi Flush systems

Clips window

- Clips aluminium frame for 40, 60 and 100 mm wallpanels
- 6 mm thick laminated glass, glued on both sides on an aluminium frame
- Modular by step
- Aluminium frame is laquered in the colors of the wallpanels
- Silicagel to absorb possible humidity

Rubber gasket window

- Factory fitted window with black rubber gasket for 60 and 80 mm wallpanels
- One standard dimension (900x1200 mmh)
- Both sides 6 mm laminated glass



light fixtures



Top access

- Standard color ral 9002
- Electronic ballast
- Lamptype TL8 or TL5
- 3x36 W
- 2x36 W
- 4x18 W
- 2x18 W

Bottom access

- Standard color ral 9002
- Electronic ballast
- Lamp type TL8 or TL5
- 3x36 W
- 2x36 W
- 4x18 W
- 2x18 W

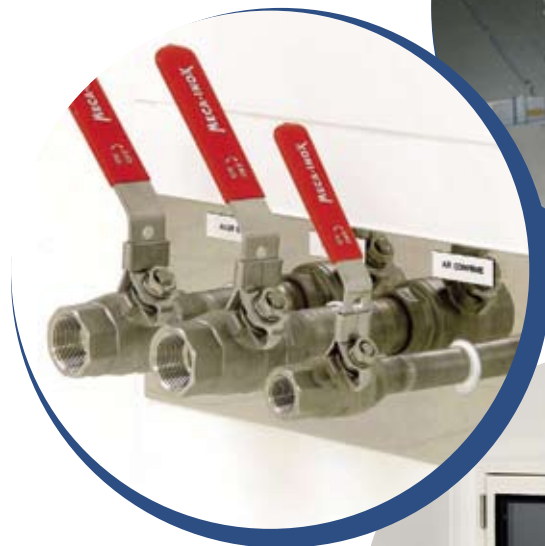
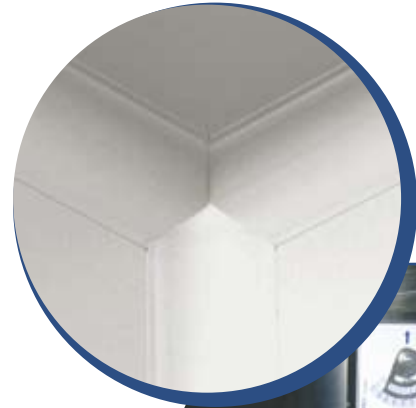
Optional

- Other colors
- Emergency battery pack

accessories

Accessories

- Recessed polyester floortrack
- Coved profiles in PVC or aluminium
- Passthrough hatches
- Flush integrated airreturnducts
- Service panels with demountable front
- Reinforced ceilingpanels





Isocab

A company of ThyssenKrupp Steel

Maatschappelijke zetel / Siège social:

N.V. Isocab S.A.

Treurnietstraat 10, B-8531 Bavikhove - Harelbeke

Tel: +32 (0)56 73 43 11, Fax: +32 (0)56 73 43 22

E-mail: info@isocab.be

Internet: www.isocab.be